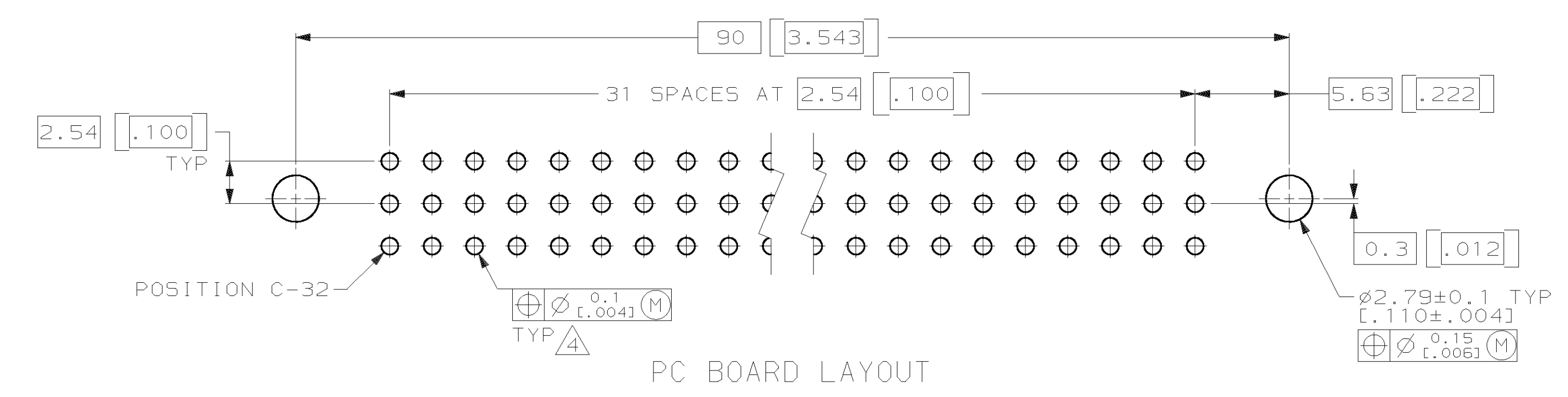
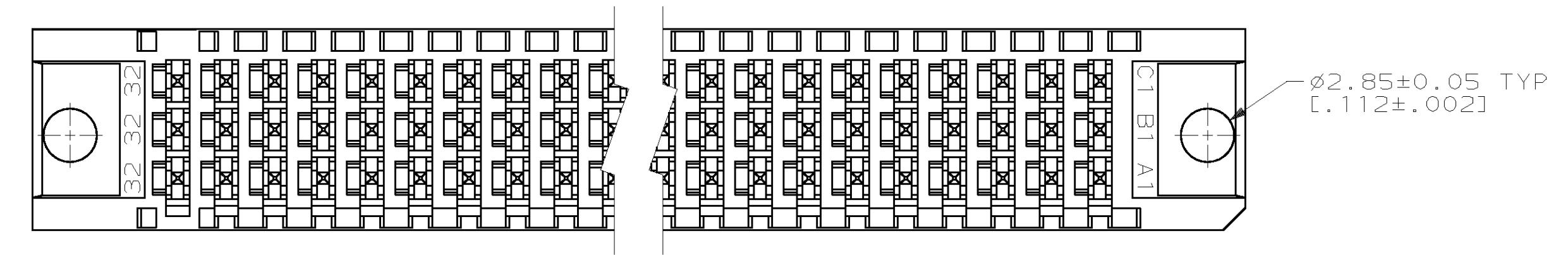
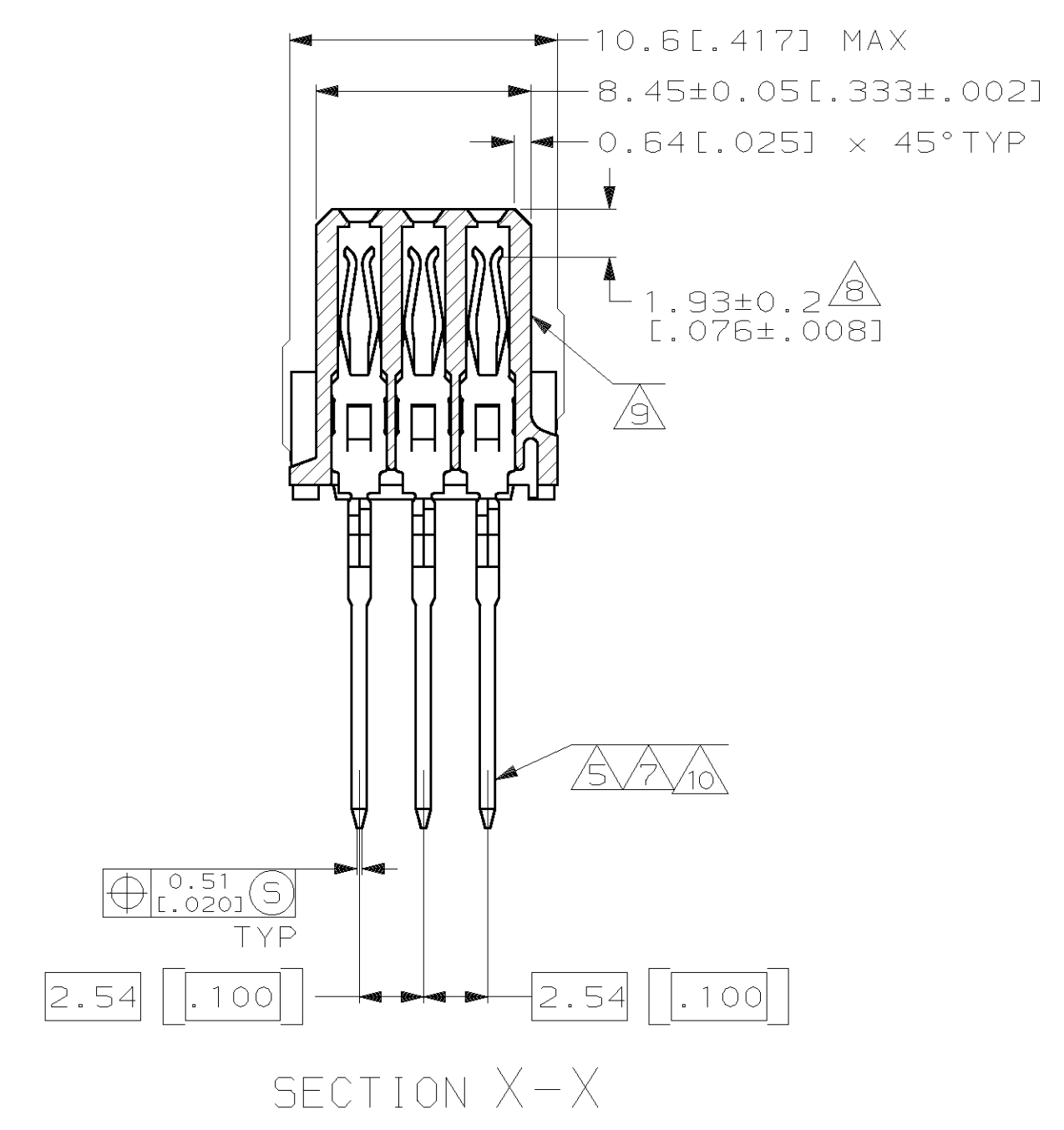
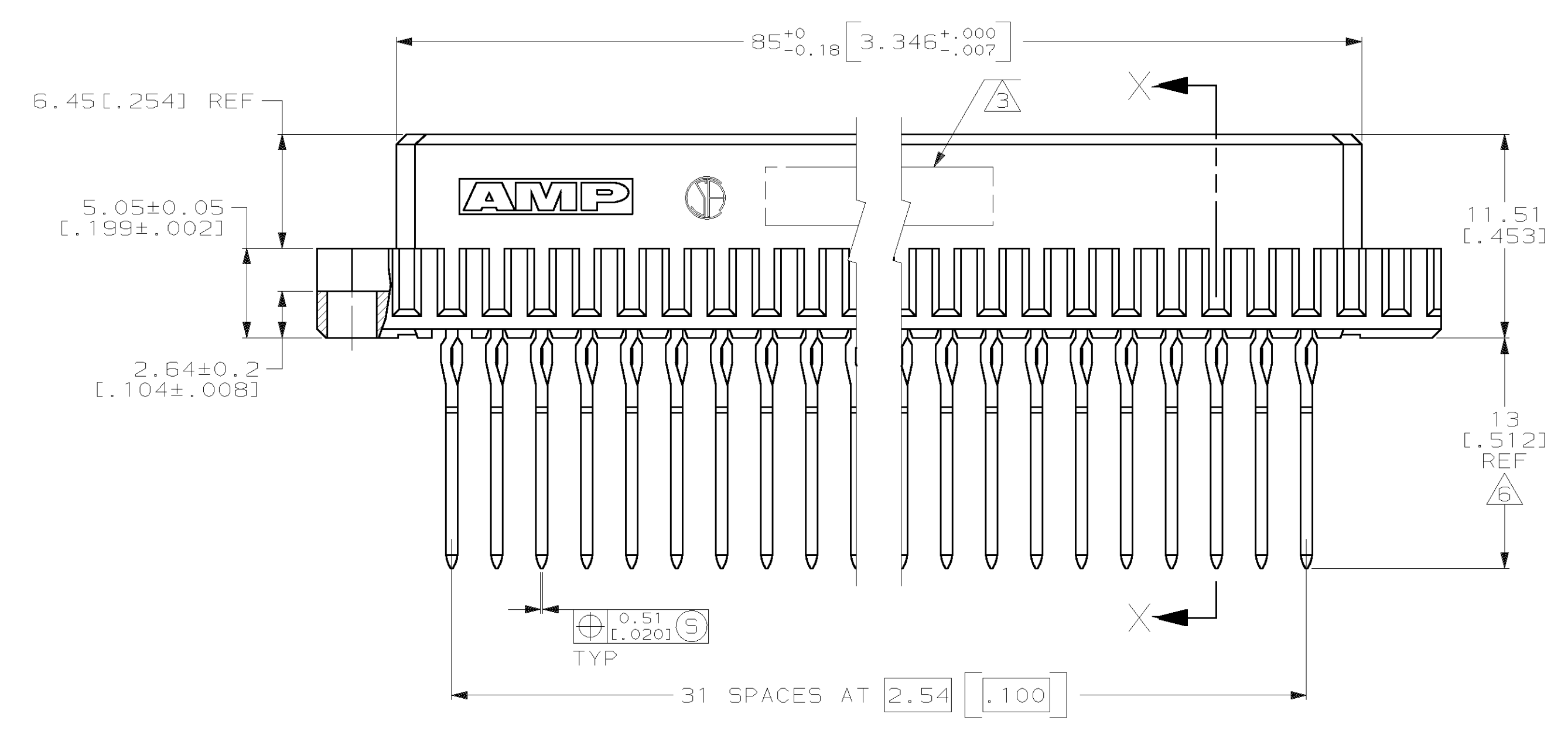
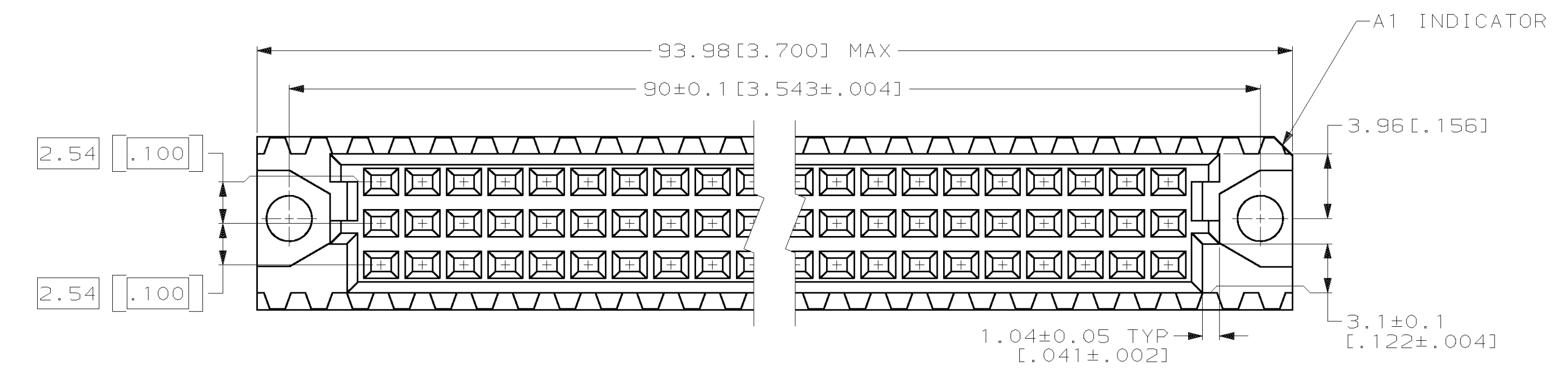


LOC		DIST		P		F		ZONE		LTR		REVISIONS			
AD	25											DESCRIPTION	DATE	APPD	
												E	REV PER EC 0U1B-0136-99	06 OCT 99	CR
												F	REV PER EC 0S12-0016-03	21MAY03	NN



- ① HOUSING MATERIAL: GLASS-FILLED POLYESTER. COLOR: GRAY.
- ② CONTACT MATERIAL: PHOSPHOR BRONZE.
- ③ PART NUMBER AND DATE CODE HOT STAMPED IN THIS APPROXIMATE AREA.
- ④ ACTION PIN POSTS REQUIRE 1.57 [.062] MINIMUM THICK PC BOARD. RECOMMENDED PC BOARD DRILLED HOLES ARE 1.15±0.025 [.0453±.0010] DIAMETER WITH 0.02-0.08 [.001-.003] COPPER AND 0.008 [.0003] MINIMUM TIN-LEAD PLATING. FINISHED HOLE AFTER PLATING IS 1.02±0.08 [.040±.002] DIAMETER.
- ⑤ CONTACT FINISH: DIN 41612 CLASS 2 IN CONTACT AREA. TIN-LEAD PLATE ON POSTS.
- ⑥ TAIL LENGTH AFTER SEATING IN PC BOARD.
- ⑦ CONTACT FINISH: DIN 41612 CLASS 2 IN CONTACT AREA AND LAST 5.08 [.200] OF POST.
- ⑧ CONTACT POINT AFTER SEATED IN PC BOARD.
- ⑨ HOT STAMPING ON THIS SIDE.
- ⑩ CONTACT FINISH: 0.00076 [.000030] GOLD IN CONTACT AREA AND LAST 5.08 [.200] OF POST. 0.00127 [.000050] NICKEL UNDERPLATE ALL OVER.

OBSOLETE	①	1-148057-5
	②	1-148057-4
	⑩	148057-5
		FINISH PART NO

DO NOT SCALE PRINT. UNLESS SPECIFIED DIMENSIONS IN mm [INCHES]		DR L. BRINER 7/26/94		AMP Incorporated Harrisburg, PA 17105-3508	
TOLERANCES ON:		CHK R. PATTERSON 8/9/94			
2 PLC DEC ±0.13 [.005]		APPD R. PATTERSON 8/9/94		NAME	
3 PLC DEC ±		APPD R. PATTERSON 8/9/94		RECEPTACLE ASSEMBLY, EUROCARD, TYPE C	
ANGLES ±		MATERIAL		SIZE	
		HOUSING: ①		D 00779 C-148057	
		CONTACTS: ②		CAGE CODE	
		FINISH		DRAWING NO	
		CONTACTS: ⑤ ⑦ ⑩		D 00779 C-148057	
		PRODUCT SPEC		SCALE	
		APPLICATION SPEC		4:1	
		WEIGHT		SHEET	
				1 OF 1	

THIS DRAWING IS A CONTROLLED DOCUMENT FOR AMP INCORPORATED. IT IS SUBJECT TO CHANGE AND THE CONTROLLING ENGINEERING ORGANIZATION SHOULD BE CONTACTED FOR THE LATEST REVISION.